

## STANDARD MAT SPECIFICATIONS

**DIMENSION**      **THICKNESS**  
4'x6'                      3/8" (9.5MM)

\* CUSTOM SIZES AVAILABLE



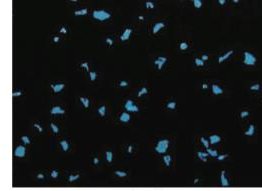
## GATORPRIME SPECIFICATIONS

TEST TYPE	ASTM	RESULTS
HARDNESS SHORE A	D-2240	75 +/- 5
WEAR LAYER THICKNESS	F410	>0.050 (PASSES)
STATIC LOAD RESISTANCE	F970	0.002 (PASSES)
RESISTANCE TO CHEMICALS	F925	GOOD
RESISTANCE TO HEAT	F1514	4.29 (PASSES)
ABRASION RESISTANCE	D3389	< 0.5 GRAMS LOSS
DIMENSIONAL STABILITY	F2199	0.12 (PASSES)
CRITICAL RADIANT FLUX	E648-03	CLASS II
MOISTURE ABSORPTION	D570	0.27%
COEFFICIENT OF FRICTION	C1028	> 0.80 WET > 0.64 DRY
QUALIFIES FOR LEED POINTS		YES
ANTI-MICROBIAL/ANTI-FUNGAL PROPERTIES		YES

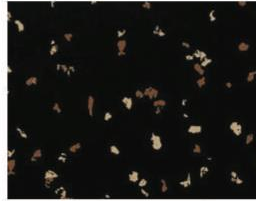
**NOTE:** PHYSICAL PROPERTIES CAN VARY BY PRODUCT TYPE.  
INFORMATION ABOVE APPLIES TO THIS PRODUCT ONLY.



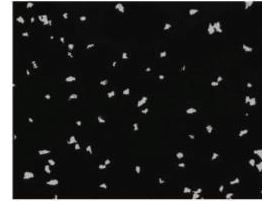
0301 Blackout



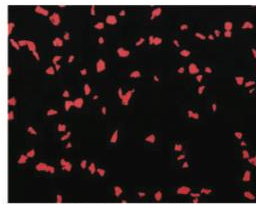
0302 Royal Blue



0303 Desert Sand



0304 Thunder Grey



0305 Ruby Red